

## A Mobile Dental Clinic for Tonga

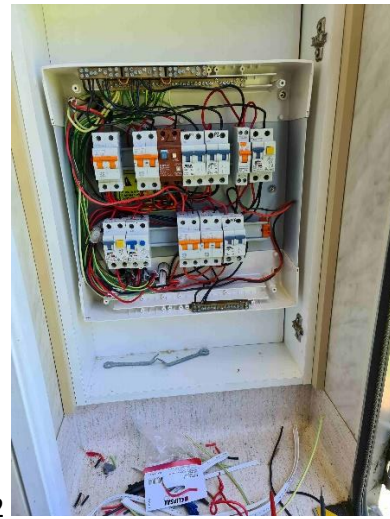






**Generously donated by Dental Health Services Victoria, this Diesel Isuzu Truck has only covered 3663 kilometers – virtually new mechanically and has been recently serviced**

**All the dental equipment has also been serviced**



1-→ → 2



The Van's Electrical Circuits have been professionally rewired by registered electrician Tony Madden of the Rotary Club of Ballarat East to convert from one 3-Phase input to two Single-phase inputs.

The Dental chair, handpieces, X-ray, suction, compressor, and air-conditioning can all work off a normal domestic 240v power point.

The autoclave and hot water will work off a separate circuit.

The circuits are all labelled

Better to use one at a time, not together, so as not to overload the power input at the school



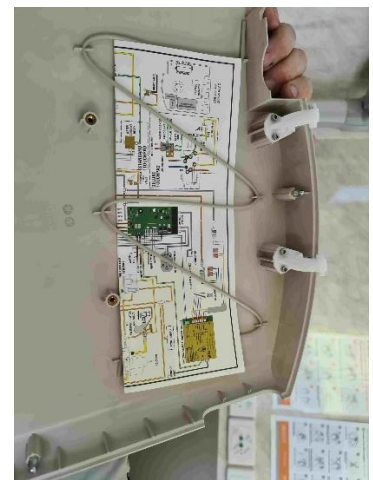
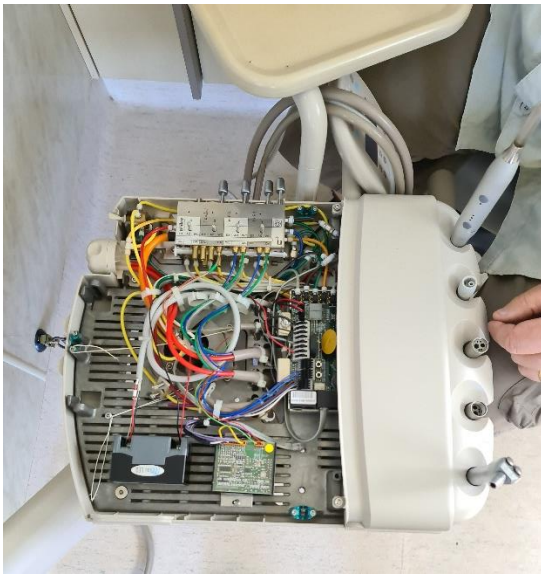
Steps hydraulically raise for safe transport. Separate armrests are provided for access



All equipment ties down securely for safe transport including suction, mobile cabinet, X-ray, light, operating arm, and the Class B Lisa autoclave. The refrigerator is a fixture and in a cupboard  
New high- and low-speed handpieces and EMS Scalers provided



Paper towel storage and fire extinguisher and blanket



A-dec operating unit with 4-hole ports for handpieces with provision for fibre optics.  
Ports for scaler and curing light (included)  
Wiring diagram inside the cover



Pump for the van's independent water supply. It can also be connected by a hose (provided) to a domestic supply.  
Compartment for Batteries (2 x 12v) water filters, hydraulics and battery isolation switch (see attached to chain)  
Note -this safety Isolation switch will need to be released to start the truck's engine



2 x portable waste tanks on wheels or the van can be connected directly to a waste system if one is available so it can be independently operated. The necessary Water and Waste Hoses with connectors are provided.

The 3- seat cab is airconditioned and has a radio.

The hydraulic levelling mechanism shown in the picture is the control for the 4 legs which can be raised and lowered to level the van on uneven surfaces. The 4 legs raise the van off the ground so it is not sitting on its tyres when in use



Hydraulic Jack. The vehicle comes with a new spare tyre.

Also pictured is a lever to manually raise the rear stairs for stowage.

Bodywork is of rust-proof aluminium

A separate Excel spreadsheet details the dental supplies and consumables that are available from Dental Health Services Victoria with an order form which I will send to you separately.

\$10,000 of supplies are available of your choice, each year for the next 5 financial years to make the van self-sustainable (i.e. up to AUS \$50,000) Not all dental products are included, but more than 4000 items to choose from

We aim to ship the truck via New Zealand on RORO ferries to Tonga in April 2023 and a volunteer team is planned to visit Tonga on its arrival

For further information please feel free to contact

Dr. David Goldsmith  
Rotary Club of Ballarat West  
[dgballarat@hotmail.com](mailto:dgballarat@hotmail.com)  
Mobile +61 488688700