

# BDC GLOBAL GROUP

## Fast Box Range.

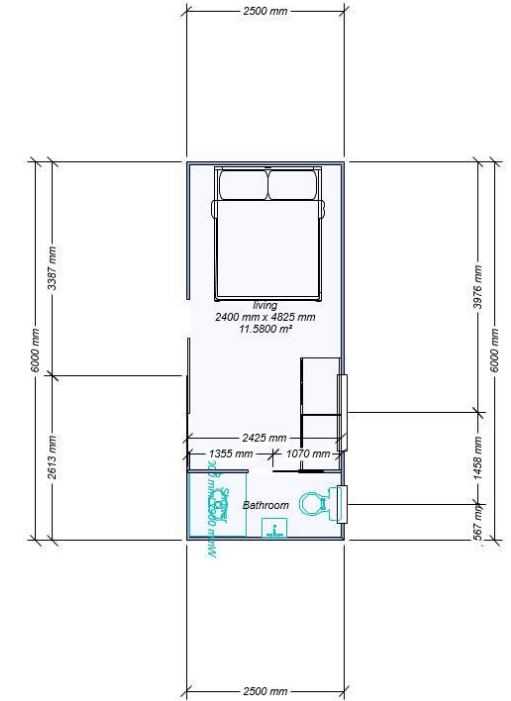
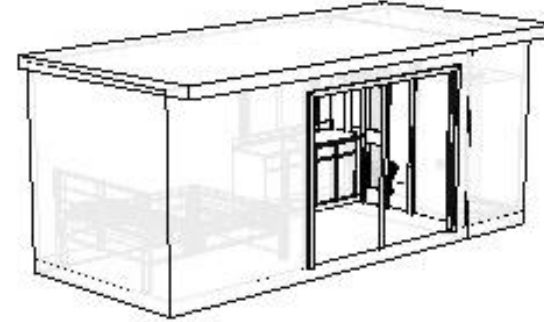
- The BDC Fast Box was a design Initiated after the recent Northern rivers flood disaster.
- As BDC has done in the past with the 2019 Mount Ulawun volcano in PNG, we have designed and implemented a quick solution to provide an emergency roof for families.
- The Fast Box comes in 3 models, the 2400, 3600 and 4800 series.
- This design is a flat pack that is assembled onsite, constructed from EPS Panel and a steel frame C section subfloor that's easy to assemble, with limited trade background.
- Each model has a separate shower, toilet and vanity with a little kitchenette. Light and power points are fitted to suit clients needs.
- The Fast Box range can be connected to existing power, water and sewerage on properties that are uninhabitable due to disaster. With fantastic thermal ratings due to the quality Australian Manufactured EPS Panel system the Fast Box is the perfect solution to emergency housing needs.



# Fast Box 2400

## Specifications and Inclusions:

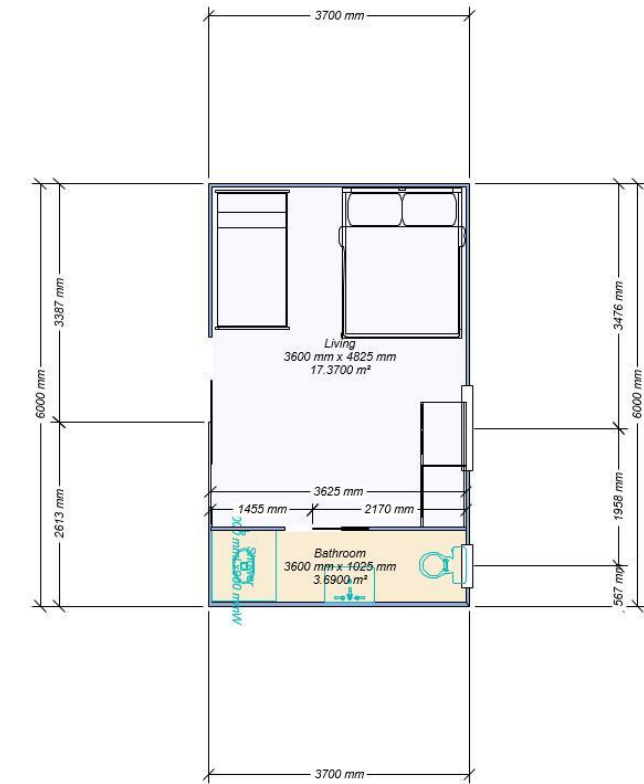
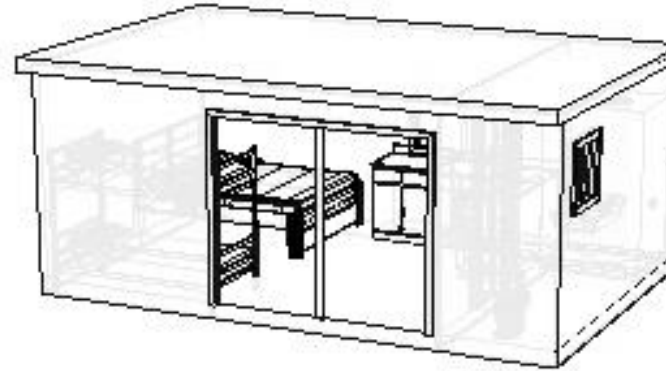
- Floor size dimensions: 2400 mm x 6000mm (Area 14.4 sqm)
- Height: 2400mm Internal floor to ceiling.
- Bathroom Size Internal: 2400mm x 1000mm
- Bathroom Inclusions: toilet, vanity unit 600w x 500D, shower base (1000W X 900 D), tapware and vinyl floor. 600mm x 600mm bathroom window.
- Kitchenette Includes small sink, 1200mm wide Unit.
- Sliding entrance door: 2400mm wide x 2100 height.
- Windows: 1200mm wide x 800 height (quantity x 1)
- Flooring: Construction Board (optional floating floor)
- Wall Panel: 50 mm EPS panel.
- Roof Panel: 50mm EPS Panel.
- Footing system: Concrete pads or stumps.



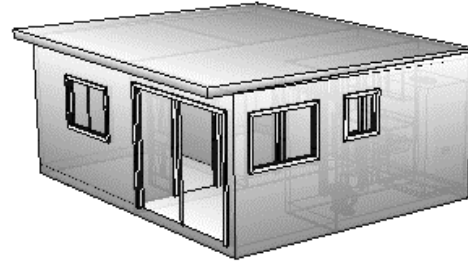
# Fast Box 3600

## Specifications and Inclusions:

- Floor size dimensions: 3600 mm x 6000mm (Area 21.6 sqm)
- Height: 2400mm Internal floor to ceiling.
- Bathroom Size Internal: 2400mm x 1000mm
- Bathroom inclusions: toilet, vanity unit (600w x 500D), shower base (1000W X 900 D), tapware and vinyl floor. 600mm x 600mm bathroom window.
- Kitchenette includes small sink, 1800mm wide.
- Sliding entrance door: 2400mm wide x 2100 height.
- Windows: 1200mm wide x 800 height (quantity x 2)
- Flooring: Construction Board (optional floating floor)
- Wall Panel: 50 mm EPS panel.
- Roof Panel: 50mm EPS Panel.
- Footing system: Concrete pads or stumps.



# Fast Box 4800



## Specifications and Inclusions:

- Floor size dimensions: 4800 mm x 6000mm (Area 28.8 sqm)
- Height: 2400mm Internal floor to ceiling.
- Bathroom Size Internal: 2400mm x 1000mm
- Bathroom inclusions: toilet, vanity unit (600w x 500D), shower base (1000W X 900 D), tapware and vinyl floor. 600mm x 600mm bathroom window.
- Kitchenette includes small sink, 1800mm wide.
- Sliding entrance door: 2400mm wide x 2100 height.
- Windows: 1200mm wide x 800 height (quantity x 3)
- Flooring: Construction Board (optional floating floor)
- Wall Panel: 50 mm EPS panel.
- Roof Panel: 90 mm EPS Panel.
- Footing system: Concrete pads or stumps.

